

Covering and Lining Membranes

1. Five simplified diagrams are shown in Figure 4.4. Select different colors for the membranes listed below and use them to color the coding circles and the corresponding structures.

- Mucosae
- Visceral pleura (serosa)
- Parietal pleura (serosa)
- Visceral pericardium (serosa)
- Parietal peritoneum (serosa)
- Visceral peritoneum (serosa)
- Mesentery
- Endothelium

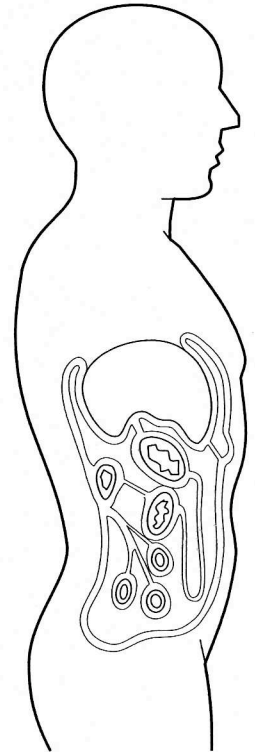
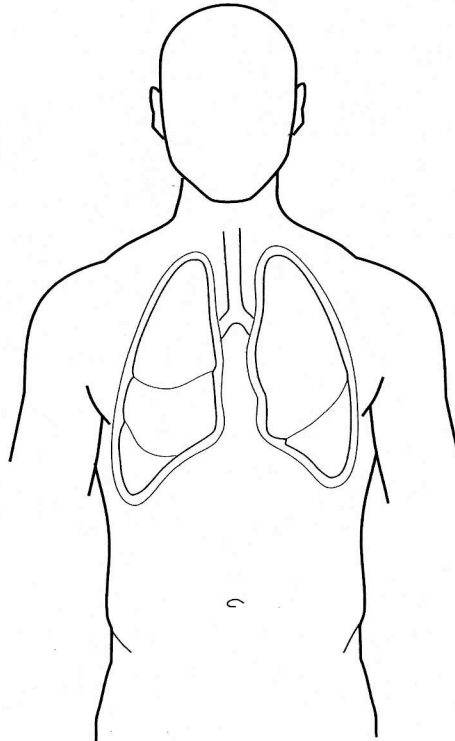
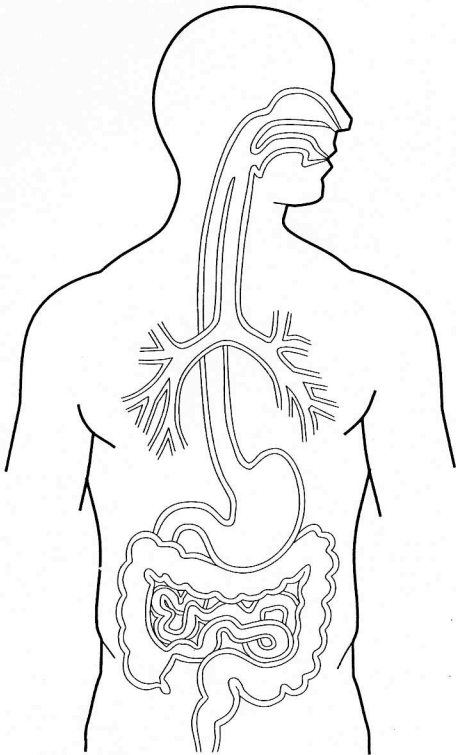
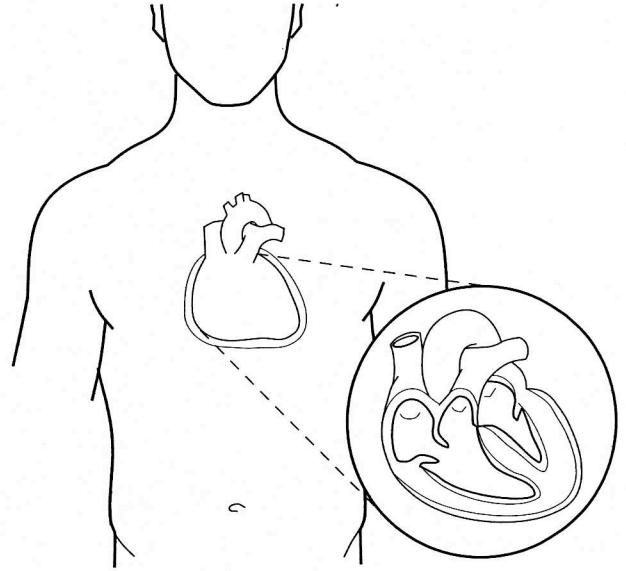


Figure 4.4